

INSTRUCTIONS FOR ADDING PRIMOS SOUNDS TO ALPHA DOGG™ AND TURBO DOGG™

Alpha Dogg™ Model# 3756

Turbo Dogg™ Model# 3755

INSTALLATION:

STEP 1 – Connect Alpha / Turbo Dogg Speaker to computer (PC or Mac)

- Turn off Alpha / Turbo Dogg Remote.
- Turn on Alpha / Turbo Dogg Speaker.
- Plug USB connection into speaker (Alpha Dogg located on back of speaker / Turbo Dogg located in battery compartment).
- Plug USB connection into computer.
- Some computers may notify of drive software installation and/or to open Removable Disk drive (may take a few seconds for computer to find drive).

Alpha Dogg:

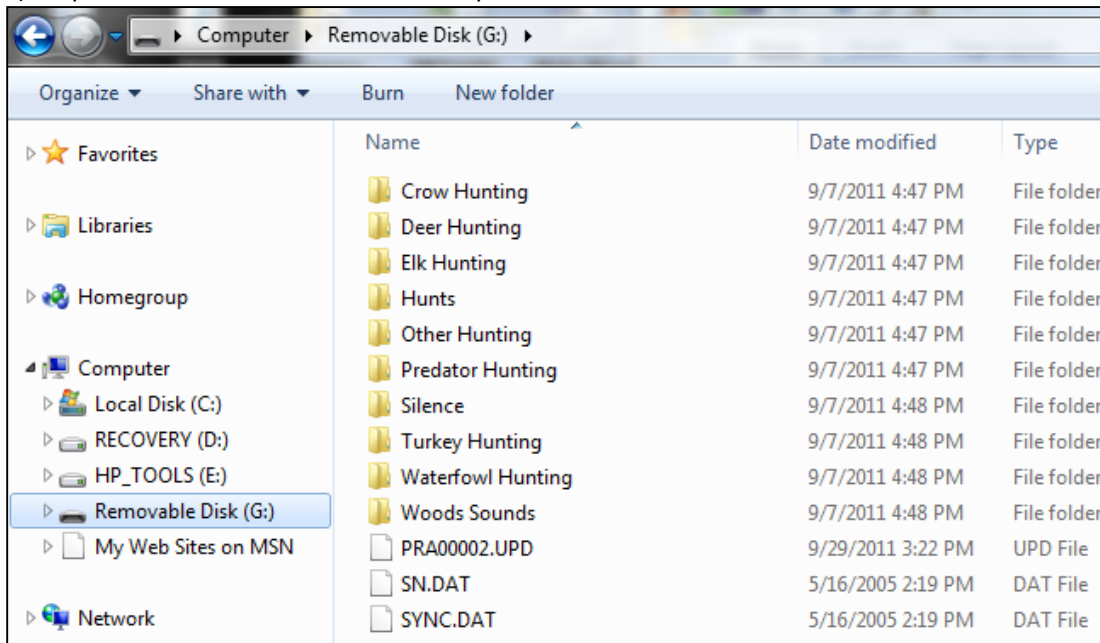


Turbo Dogg:

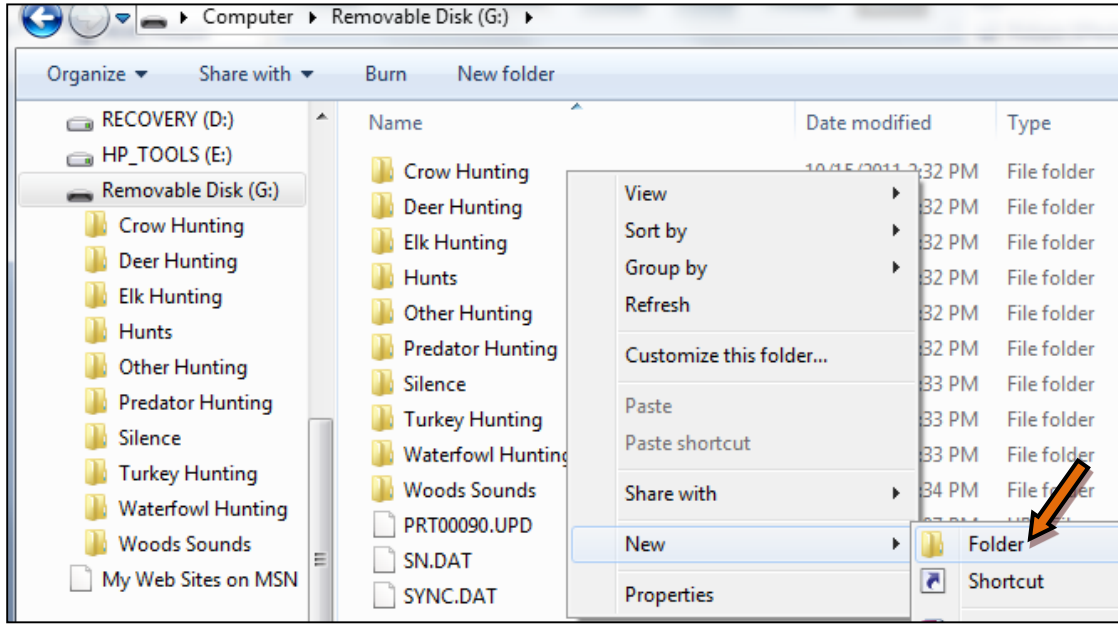


STEP 2 – Opening Removable Disk and Creating New Subfolder

- Open Removable Disk drive on computer.



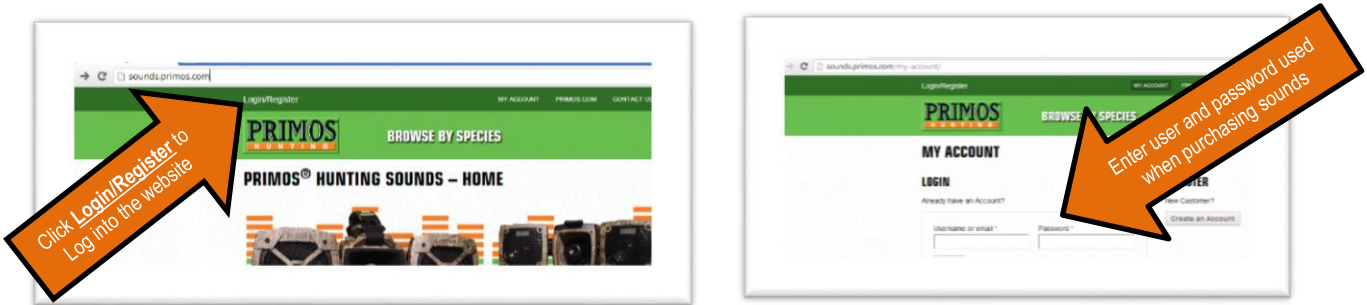
- b) Create new subfolder or place sound in existing folder or subfolder. You can also add new sounds to any of the existing folders EXCEPT the HUNTS folder. **IMPORTANT: DO NOT add sounds or subfolders to 'HUNTS' folder. 'HUNTS' folder is specially designed for EXPERT HUNTS. Only EXPERT HUNTS can be added to this folder.**



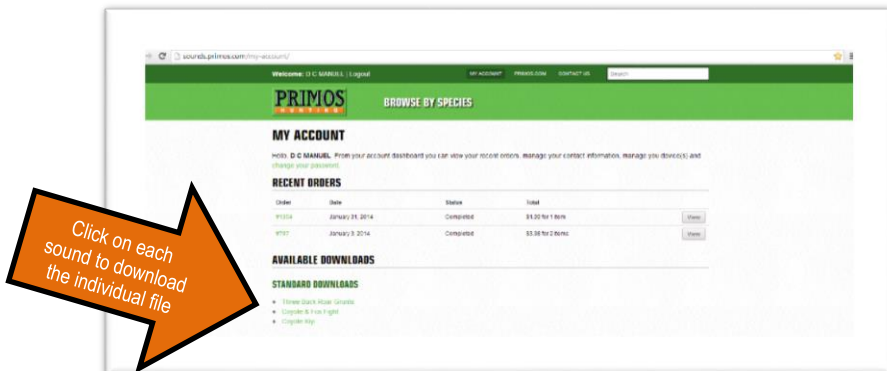
STEP 3 – Installing Primos Sound from <http://sounds.primos.com> website

You should have received 2 emails from each order you placed at the sounds.primos.com website. The first email will inform you that the order is being processed and the 2nd will verify that the order has been completed and the sounds are now available to download from the website. All of your purchased sounds will be available from this website via the log in credentials you used to purchase them.

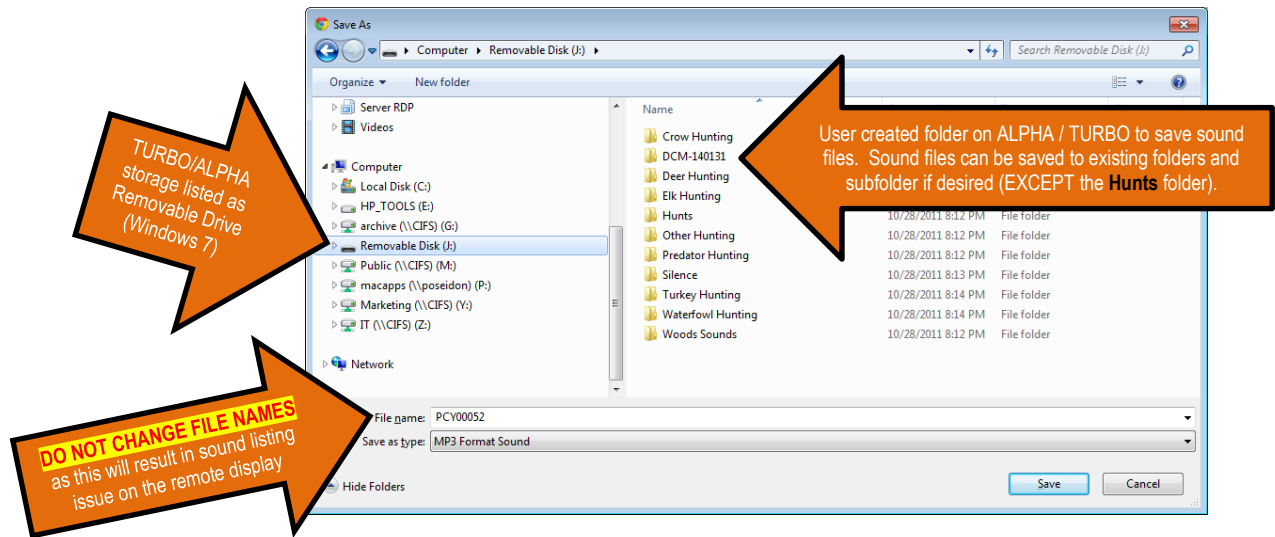
- a) Log into the <http://sounds.primos.com> website with the user name (email address) and password used to purchase the sounds (images below)



- b) Under the MY ACCOUNT page, will have a list of each order placed and a list of sounds available to be downloaded. Click on the desired sound to download it. Note that each sound must be downloaded separately (see image below).



- c) When a sound is selected for download, a dialog box to save the file will open (see image below). You can select to save the file to any location on your computer (Documents for example) or you can save the file directly to the folder location on the Alpha or Turbo Dogg storage created in STEP 2.



IMPORTANT: DO NOT add sounds to 'HUNTS' folder. 'HUNTS' folder is specially designed for EXPERT HUNTS. Only EXPERT HUNTS can be added to this folder.

IMPORTANT NOTE: Do **NOT** change file names of sound as this **WILL** affect EXPERT HUNTS and proper sorting and display of sounds on the remote. Editing the file names **WILL** result in incorrect listing of sound on the remote display.

STEP 4 – Repeat STEP 3 for each sound file in AVAILABLE SOUNDS list that you would like to add to the ALPHA DOGG or TURBO DOGG call. When all desired sound(s) are added to the electronic call, proceed to STEP 5

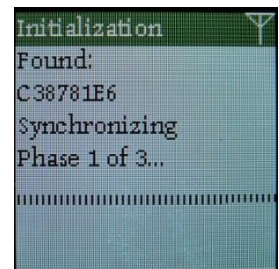
STEP 5 – Safely Disconnect USB from Computer

- Close Removable Disk Drive folder and safely disconnect USB by following computers instructions for Safely Remove Hardware and Eject Media.
- Disconnect USB cable from computer and disconnect from Alpha / Turbo Dogg Speaker.

STEP 6 – Sync Alpha / Turbo Dogg remote with speaker

Note: This step may take approximately 10 minutes to perform. Keep remote and speaker together during syncing.

- With speaker power on, turn on Alpha / Turbo Dogg remote.
- Remote will automatically sync with speaker and update new sounds by syncing phase 1 thru 3.
- Once sync is complete, 'Main Menu' will appear on remote. Remote and speaker are updated with sounds and ready for use.
- New sounds are located in sounds and folder you saved them in.



For questions email service@primos.com or call customer service at (601) 879-9323 OPTION 3
Visit <http://primos.zendesk.com> to review our Knowledge Base.

Primos Hunting
604 First St., Flora, MS 39071
(601) 879-9323
www.primos.com

