



PRIMOS
HUNTING

&



X CAM

X CAM

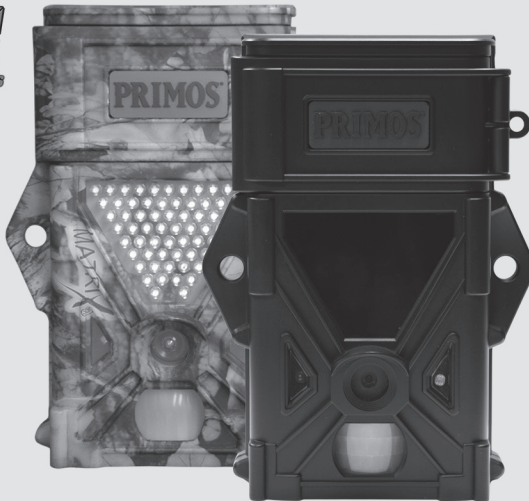
BLACKOUT

Model No. 63040

Model No. 63050

INSTRUCTION MANUAL

7.0
MEGA PIXELS



Camera Serial #

Before Operation

Quick Start
Initial Camera Setup

Camera Menu Options
(Detailed Description)

Other Features/
Functions

Recommended
Accessories

Operating Tips

Customer Service &
Warranty



PLEASE READ CAREFULLY BEFORE USE

Additional information on this product and answers to frequently asked questions can be found at www.primos.com

© 2011 Primos® Hunting

Document Version #
XCam & XCam Blackout 1



PLEASE READ CAREFULLY BEFORE USE

IMPORTANT

For your protection, please carefully read these warnings, precautions and safety/operating instructions completely before operating the camera. Follow these instructions closely and keep this manual for future reference.

WARNING

To reduce the risk of fire, electrical shock or product damage/failure,

- Do not expose unit with the door open to rain, moisture, dripping or splashing. Do not open or close the camera door with wet hand. Completely wipe off water on camera and camera door before opening.
- Do not lay product on moist ground or submerge in water (this unit is designed for vertical, upright outdoor use)
- **DO NOT OPEN CASE HOUSING. UNINSULATED, 'DANGEROUS VOLTAGE' WITHIN PRODUCTS ENCLOSURE. DO NOT REMOVE FRONT OR BACK HOUSING COVER. THERE ARE NO USER - SERVICEABLE PARTS INSIDE, REFER SERVICING TO PRIMOS® CUSTOMER SERVICE.**
- Only use batteries as specified in this user manual and install according to correct polarization. Failure to follow may result in leaking or exploding batteries, damage to camera, fire or personal injury. Do not handle damaged or leaking batteries.
- Do not expose to extreme heat. Do not leave product and/or batteries exposed in direct sunlight inside a vehicle, or other contained environment for a long period of time.
- Only use accessories as recommended in this manual

CARE & CAUTION

- Transport and handle with care. Do not strongly shake, bump, hit, drop or otherwise cause impact to the camera – can result in camera malfunction, damage to lens, sensor, LCD screen, or other key components. Additionally, damage to the case could result in imperfections to water-resistant properties.
- Take extra care when handling or using camera in places with sand and dust. Sand, dust and foreign substances exposed to camera lens, PIR sensor, LED array and/or the internal door panel components may result in poor picture quality or malfunction of camera. If exposed to any of these elements, please carefully wipe off completely before continued use.

MODIFICATION WARNING

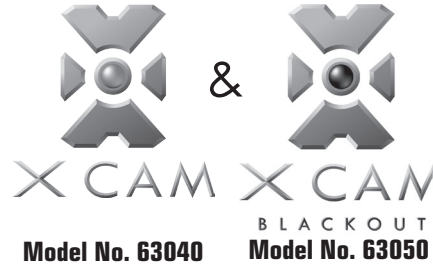
You are cautioned that any changes or modifications not expressly approved in this manual could void your warranty of this equipment.

OPERATING TEMPERATURE

- Recommended storage temperature range -10°F to 140°F
- Recommended operating temperature range 20°F to 120°F

WARNING

To avoid possible camera, battery or other damage and/or injury, NEVER ATTACH A BATTERY to the camera's external 6V DC power port while other batteries are installed in the camera. The 6V DC power port is designed to be used as the ONLY power source, do not install batteries in the camera while using this external battery source.



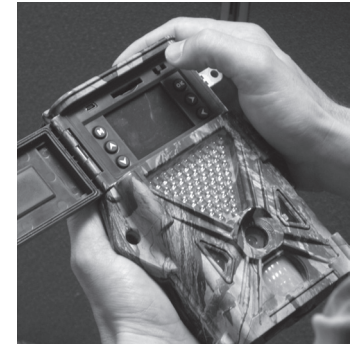
**Simple to Use
Simple to Understand**

ONLINE SUPPORT

Instructions



Video Clips



Visit www.primos.com/cameras for
Instructional Video Clips.

Visit www.primos.zendesk.com for FAQ,
PDF Manuals, Camera Support or to open a
Troubleshooting Ticket.

Table of Contents

Before Operation

Needed to Operate	1
Select SD Card Size	2
Help Selecting Photo	2
Identify Parts	3
Understand Button Functions	4

Quick Start - Initial Camera Setup

Easy 6 Step Setup	5
Camera Settings Backup Battery	6

Camera Menu Options

Live Preview	7
Image Viewer	7
Camera Mode	7
Photo Resolution	7
Photo Burst	7
Video Length	7
Delay Interval	8
Number of LED's	8
Set Date/Time	9
Password Security	9
Battery Type	9
Format SD Card	9
Camera Information	9

Specifications

Technical Specifications	10
--------------------------------	----

Other Features/Functions

Viewing/Retrieving Image	11
Deleting Photos/Videos	12
Powering Unit Off	12
Image Stamp	12

Recommended Accessories

Primos® Camera Accessories	13
Other Accessories	13

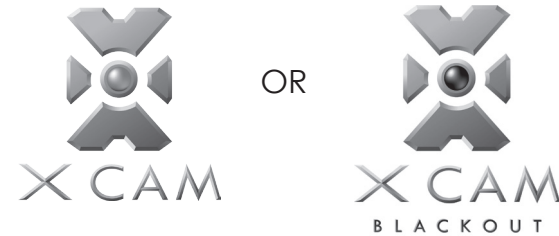
Operating Tips

Important Notes	14
-----------------------	----

Customer Service & Warranty

Contact Info	17
Warranty Protection	17

Introduction



X CAM SEE EVERYTHING™

Your goal isn't to have a camera in the woods. It's to know when and where you need to be to bag more than a picture. That's why Primos® X CAM™ is loaded with easy-to-use features that capture clear photos of all the action - even when it's over 65' away from the camera. What's more, X CAM™ delivers information so detailed, you can learn travel patterns and accurately size up bucks in your area. So you not only see everything, you know everything.

X CAM DO NOT DISTURB™
BLACKOUT

No Flash. No Glow. No Light. Designed to be Undetectable to Animals and Humans. Complete surveillance without pressuring and alarming game. Mature bucks reach maturity by becoming experts in the art of stealth - sticking to the shadows as they sense and feel pressure other game can't. That's why Primos® developed a trail cam just as stealthy - the X CAM™ BLACKOUT™.

X CAM™ & X CAM™ BLACKOUT™ INSTRUCTION MANUAL

Included:

1. X CAM™ or X CAM™ BLACKOUT™ (1)
2. 72" Mounting Strap (1)
3. Instruction Manual
4. Warranty Registration Card

BEFORE OPERATION

Needed to Operate:

1. Four (4) "D" size Alkaline or Rechargeable Batteries

Note: If the camera battery type does not match batteries installed in camera, the battery level indication on the TFT screen will not be accurate.

2. One or more SD Memory Cards

(Camera will support up to 32GB SD or SDHC Cards)

Note: If no SD Card is installed 'NO SD' will display on initial menu screen

Select SD Card Size

This chart allows you to see the approximate capacity of 1GB, 2GB, 4GB & 8GB SD Memory Cards. Check to see what [megapixel] photos or [resolution] videos that will be best for your SD Card.





*Photo/Video SD Card Storage Capacity

		1GB	2GB	4GB	8GB	16GB	32GB
Photo	7MP	1180	2360	4720	9440	18880	37760
Photo	5MP	1420	2840	5680	11360	22720	45440
Photo	3MP	2500	5000	10000	20000	40000	80000
Video	10S	150	300	600	1200	2400	4800
Video	20S	75	150	300	600	1200	2400
Video	30S	54	108	216	432	864	1728
Video	40S	38	76	152	304	608	1216
Video	50S	32	64	128	256	512	1024
Video	1 Minute	27	54	108	216	432	864

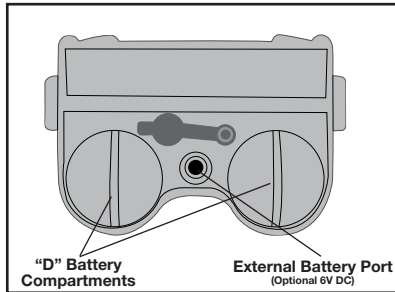
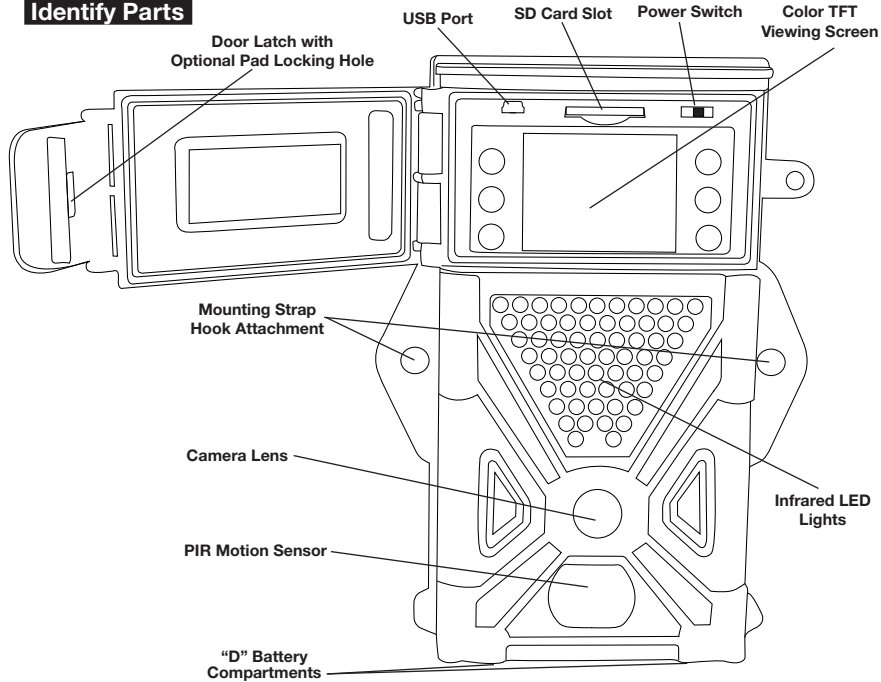
*Approximation - photo/video sizes vary based on individual image details

Help Selecting Photo Resolution:

Photo

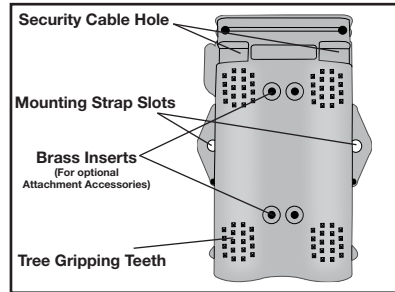
Default	Resolution (Image/File Size)		Usage Guidelines	# of Images	Storage/Recovery Speed	Battery Life
		Larger	Best image quality - finer details when zooming in for a closer look. Use for chance of capturing photo of a lifetime if you think the 'big trophy' is in the area. Great for printing large-scale, photo quality images.	Less 	Slower	Shorter 
X	7MP	↕	Better image quality and a balance of benefits between lower and higher MP.			
	5MP		For good image quality and recording a large number of images. Faster to save, transfer and e-mail. Recommended for standard everyday use.	More 	Faster	Longer 
	3MP	Smaller				

Identify Parts



Bottom View

3



Back View

UNDERSTAND BUTTON FUNCTIONS



Camera Power Switch - The switch has three settings OFF - SET - RUN. The SET which is in the middle allows you to set your camera's date, time, etc. The RUN which is to the right allows the camera to start working according to how you set it.

M (MENU) - Takes you to the camera's MENU setting and also functions as a "BACK" button.

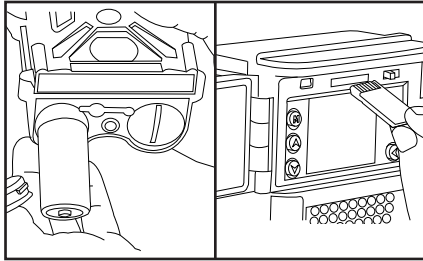
OK (ENTER) - Allows you to choose the settings you want.

4

QUICK START INITIAL CAMERA SETUP

Easy 6 Step Setup

1. Install Batteries - Uses four (4) "D" size Alkaline or Rechargeable batteries. *(Note: Use camera menu to change 'battery type'. If the camera battery type does not match batteries installed in camera, the battery level indicator on the TFT screen will not be accurate.)*



2. Install up to 32GB SD Memory Card

(not included) into the card slot on the bottom of the camera. If SD Card is not installed, camera will display "NO SD" on Camera Screen.

3. Secure Camera to Tree or Pole using included Mounting Strap with rubber coated hooks. *(Note: Do not overtighten strap. Too much strap tension could cause damage to camera housing.)*

4. Turn On Camera and Review Camera Menu Settings by sliding power switch to SET. The LCD screen will turn on and show the Camera Menu. Push **▲UP** or **▼DOWN** arrows to navigate through all Menu options. For convenience and simplicity, your camera has the following DEFAULT SETTINGS:

Camera Menu	Default	Other Settings
Camera	5MP	Camera - 7MP, 3MP
Video	10s	Video - 20s, 30s, 40s, 50s, 1min
Number LED's	32LED	62LED
Delay	5s	10s, 20s, 30s, 1min, 5min, 30min, 60min
Burst	1 Picture	2 - 9 Pictures
Time	N/A	User needs to set
Date	N/A	User needs to set

MP - Megapixel

s - Seconds

M - Minutes

5. Setup-Time and Date - Navigate to Date/Time menu screen and make sure settings are accurate.



6. Your camera is ready to use! Slide camera power switch to 'RUN' active mode. After 15 seconds the X CAM™ will be armed and ready to take pictures whenever the Motion Sensor detects motion or movement. *(NOTE: TEST camera before placing in field/woods. Run camera in live "On/Run" mode and make sure Photos/Videos are being saved on SD Card.)*

Camera Settings Backup Battery

*** This X CAM™ is equipped with an internal rechargeable backup battery that is dedicated to saving the date, time and menu settings when the main D-cell batteries are removed. This internal backup battery can preserve your settings for up to 6 months when fully charged. *(NOTE: With first use or after a long period of time without camera use, internal battery may initially take up to 30 hours to fully charge - charges only when "D" batteries are installed when camera is turned ON.)*

CAMERA MENU OPTIONS



Live Preview – Shows FOV (field of view) of camera ‘on screen’ for precise aiming and camera setup every time – never guess and setup the camera the wrong direction or angle again

When in Live Preview screen you can do the following:

1. See daytime Live Preview
2. Press button to see Live Preview at night
3. Press button to take a Picture
4. Press button to enter video capture mode. Press button to take a Video.



Image Viewer – Display photos/videos on the X CAM™ Camera

When in Image Viewer you can do the following:

1. Press or buttons to scroll through photos/videos
2. Video Playback
 1. Press button to start playing video
 2. Press button to fast-forward video
 3. Press button to rewind video
 4. Press button to stop video
3. Press button to delete one or all photos and videos



Camera Mode – Select photo or video mode

1. When in photo mode, **Photo Resolution** will appear in the menu. Select photo MP (Megapixel).
2. When in photo mode, **Photo Burst** will appear in the menu. Select number of pictures taken each trigger event.
3. When in video mode, **Video Length** will appear in the menu. Select video length from 10 seconds to 1 minute.

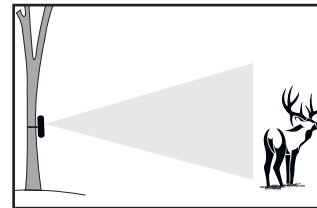


Delay Interval – The pre-set amount of time you desire between photo/video recordings (change icon to time out)



Number of LED's – (THIS DOES NOT APPLY TO THE X CAM™ BLACKOUT™). Choose to use all LED's for longer night vision or less LED's to save battery power when the longer distance is not needed.

More LED's



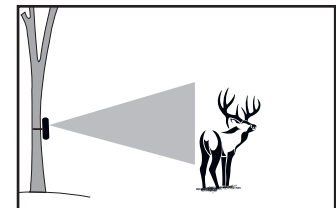
Advantage

- **Longer Night Illumination**
- **Brighter and Clearer Pictures**

Drawback

- **More Power Consumption**
(shorter battery life)
- **Greater Chance of Deer Recognizing “Red LED Glow”**

Less LED's



Advantage

- **Less Power Consumption** (longer battery life)
- **Less Chance of Deer Recognizing “Red LED Glow”**

Drawback

- **Shorter Night Illumination**
- **Pictures not as Bright**

Primos® recommends using versatility of selectable LED Number to your advantage depending on the situation. If you know where the game is going to be and can setup the camera closer, it probably makes sense to enjoy the advantages of Less LED'S. However, when you are uncertain or need the extended night range, you can use all of the high-output LED's!



Set Date/Time – Time/Date setting in camera will be displayed on pictures and videos.

Example:



Password Security – Can add password security by setting 4-digit password. Once password is entered it will be required when trying to enter menu or turn the camera power on. **WARNING:** Always remember 4-digit password. There is no way to clear/reset password without sending camera back to Primos Customer Service.



Battery Type – Select whether you are using Alkaline or NiMH batteries. If the camera battery type does not match batteries installed in camera, the battery level indication on the TFT screen will not be accurate.



Format SD Card – Formats SD Memory Card installed in camera – this DELETES ALL PHOTOS OR VIDEO or any other data on memory card!!!



Camera Information – View number of pictures/video stored on camera, used/free space remaining and camera firmware version installed.

Technical Specifications

Image Sensor	5MP Color CMOS sensor
Maximum Resolution	3264x2448
Lens	F=3.1mm FOV(Field of View)= 52° Auto IR-Cut-Remove (Night)
IR-Flash	60Ft.+
Screen Display	2.5" True color TFT LCD
Internal Memory	32MB
External Memory	SD-Card from 8MB to 32GB
Picture Resolution	7MP = 3264x2448 5MP = 2560x1920 3MP = 2048x1536
Video Resolution	640x480 (Default, 18FPS)
PIR Lens	Multi Zone
PIR Detection	50Ft.+
IR Bulbs	62 Long Range IR Emitters (adjustable, 32 LED or 62 LED)
Operation	Day/Night(24hours)
Trigger Time	~1.3s, Live Light-Metering
Delay	5s - 60m Programmable
Photo Burst	1-9 Programmable
Picture Interval	~1s
Video Length	5-60s Programmable
Power Supply	4D alkaline or NiMH batteries 6V DC
Stand-by Duration	6-12 months
Power Consumption	180mA (+430mA with 32 LEDs, +800mA with 62 LEDs)
Low Battery Indicator	On LCD screen
User Interface	Full Color Icon Menu
Ports & Jacks	USB Jack SD Card Slot 6V DC Jack
Mounting	Strap
Dimensions	7.5 x 5.5 x 3.5
Weight	Approximate 1.2 lb
Operation Temperature	-10F to 130F (Recommended)
Storage Temperature	20F to 100F (Recommended)
Security Authentication	FCC

Viewing / Retrieving Images

Explore these various methods for viewing X CAM™ photos/videos:

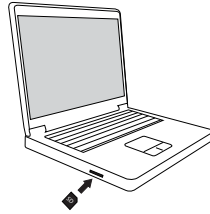
1. Remove SD Memory Card from slot in bottom of camera.
2. Replace with separate, fresh SD Card if you want camera to continue working.

How to View Images/Videos

1. View images/videos with SD Card directly in computer.

If available you can view images/videos by inserting SD Card directly in SD memory card reader slot in computer.

(NOTE: When using a computer you can view and delete images directly from SD card or you can copy and store files to your computer. Once files are safely stored on computer, you can delete from SD Card to clear the space for next camera use.)



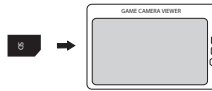
2. External USB memory card reader

If your computer doesn't have an SD Card reader built in, you can view images/videos by attaching USB memory card reader to your computer.



3. Game Camera Viewer.

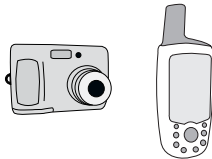
You can view images/videos using a portable device designed specifically for game cameras.



4. Other portable handheld devices

If convenient, you may try viewing images/videos using other portable handheld devices such as: digital cameras, GPS, etc...

(NOTE: Many digital devices with viewing screens will display pictures taken by the X CAM™. You can try these alternative viewing devices at your own risk -- not all devices with SD Memory card slots will read the X CAM™ video and/or photos.)



Deleting Photos/Videos

The Camera's built-in image viewer gives the option to delete one photo/video at a time or all photos/videos (see 'Image Viewer' under Camera Menu Options pg. 7). (NOTE: You can also erase all photos/videos by formatting SD Card. See 'Format SD Card' under Camera Menu Options pg. 10.)

Powering Unit OFF

SLIDE CAMERA POWER SWITCH ALL THE WAY TO THE LEFT 'OFF' POSITION

(Powering Unit Off)

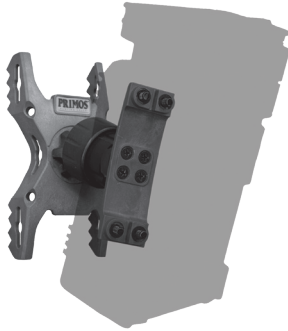


Image Stamp



RECOMMENDED ACCESSORIES

Primos® Camera Accessories



- **Makes Every Camera have Better Vision**
 - **Easily rotate your camera to get the PERFECT SHOT**
 - **Fits ALL camera brands**
 - **Install camera high in tree for better view and security**
 - **Magnetic connection socket allows camera to quickly attach/detach from tree**
 - **Includes T-Post adaptor for surveillance without trees**

Included:



Tree
Bracket



Compact Primos®
Camera Mount



Universal
Camera Mount
(Works with ALL
Camera Brands)

Other Accessories

1. Padlock for door latch to prevent tampering camera settings or memory
2. Locking Security Cable to run through case and around tree. Master Lock® Python™ Adjustable Locking Cable is convenient and highly recommended.
3. 6V DC External Battery for those needing extended battery life for remote or extremely active locations (plug into bottom of camera)

OPERATING TIPS

IMPORTANT NOTES

Learning to use your X CAM™ – Visiting www.primos.com/cameras and watching our Instructional Video Clips is the ‘easiest way’ to learn ‘how to use’ your X CAM™!

Troubleshooting or Questions – Before calling customer service, visit www.primos.zendesk.com to find troubleshooting tips, frequently asked questions and answers, as well as any updates

Battery Level on Display - Camera identifies fully charged rechargeable batteries, such as NiMH, as less than 99% on battery indication level. Rechargeable batteries run on different voltage and cause this variation. Most fully charged rechargeable batteries will show 50-60%.

Battery Life – Long battery life is one of the most important requirements for convenient and enjoyable game camera use. There are several variables that will determine the battery life including type of batteries, temperature outside, image/video settings and frequency of camera activity. Colder temperatures, more advanced image/video settings and high photo frequency (low camera delay) will result in shorter battery life. Different brands of batteries may also perform much better than others, so please experiment to find what works best for you. Primos® has included a Image/Video Selection Guide in this manual to help pick the best camera settings for higher performance or better battery life.

Internal Rechargeable Backup Battery - With first use or after a long time period or camera storage, internal battery may initially take up to 30 hours to fully charge (charges only when “D” batteries are installed when camera is turned ON). Once charged, this backup battery is dedicated to saving the date, time and menu settings when the main D-cell batteries are removed.

Camera Mounting Direction – The red status light illuminates when camera detects motion. To verify your camera is pointing in the correct direction, you can walk in front of the camera after it is setup and look for the red light to illuminate when you are detected – the camera will take pictures/videos when motion is detected according to your settings. The Primos® 20/20 Mount makes mounting easier and allows photo capture from the angle of your choice (versus relying on the tree).

Camera Mounting Height – Three feet from the ground is usually a good height to mount the camera, but it depends on the type of game and ground terrain. The Primos® 20/20 Mount makes mounting easier and allows photo capture from the angle of your choice (versus relying on the tree).

Blurry Image Quality – Primos® takes pride in the quality of images captured by the X Cam™ or X CAM™ BLACKOUT™. However, this is an outdoor product that will be constantly exposed to different/changing conditions that can affect the quality level. Blurry images typically result from objects causing interference between the camera and the intended focal point (game too close, brush, trees, etc). Blurry images may also be the result of direct sunlight, fog, condensation (dew), water droplets, snow/ice, dirt, dust or other debris on the camera lens. Carefully cleaning the camera lens window, making sure there are no scratches and/or placing the camera in a different location may solve this type of problem.

Blurry Image Quality – Motion – Primos® takes pride in the quality of images captured by the X CAM™. With available technology, there was no way to eliminate the potential of photos with blur caused by game moving (motion) too quickly. We have optimized the X CAM™ to limit the number of motion blurred images and provide as many clear, quality photos as possible.

Dark or Light Image Quality – Primos® takes pride in the quality of images captured by the X CAM™. As daylight transitions back-and-forth between light and dark, the camera changes settings to optimize the picture. Some ‘lighter’ or ‘darker’ photos may be captured during the camera transition process – this should be a limited amount of photos with the optimization of our software. Also, please try to avoid setting up the camera in situations where the sunlight will shine directly into camera lens. With any photo capturing, taking pictures directly into sunlight produces less than desirable results.

Empty Photos/False Triggers – If there are a large number of photos taken with no game present in the frame, first make sure your camera is mounted at the correct height and in the right direction. If there are limited, random photos with no game present, the following scenarios are most likely 1) an animal ran through the picture extremely fast or 2) a smaller animal/bird is around the camera/sensor but is not in the camera field of view or 3) the sunlight or heat in combination with moving elements (trees, brush, shadows) is causing a false trigger. The first two scenarios are hard to prevent, but the sunlight/heat should not cause many false triggers as the camera has been optimized to sense and distinguish for correct triggering. To prevent potential false triggers, try not to setup

the camera directly in the sunlight. You may also change the Camera Sensitivity Setting according to your situation.

Camera Doesn't Save Photos/Video – The SD Memory Card may be locked. Please look closely at the card and make sure the card is in the ‘unlocked’ position. If photos/videos are still not saved by camera activity, the SD Memory Card may be corrupt or damaged. You can try to reformat the card on a computer and try it again, or simply try replacing it with a different/new SD Memory Card.

Storing Camera – Do not store in extreme heat, cold, moist or humid conditions. Remove batteries when storing for periods longer than one week without use.

Operating Temperature - Recommended storage temperature range is 20°F to 100°F and recommended operating temperature range -10°F to 130°F

Inside Camera Operation – The camera is designed for outdoor use. It is ok to test the camera indoors for operation, but please note the indoor lighting and reflection may not be optimal for correct photo exposure and video recording.

Selecting Image Size/Video Quality - More and bigger is not always better. See Help Selecting Photo or Video Settings under ‘Before Your Operation’ guide.

Keep Clear of Debris - Keep the small water drainage hole on the camera door (running from top lip to external window) clear of debris. This drainage hole allows any water that happens to get on top of the door lid escape. If this hole is plugged and not allowed to drain, the water can possibly enter the inside of the door (even when closed) and cause permanent damage to the camera.

CUSTOMER SERVICE & WARRANTY

WARRANTY

You MUST register your X CAM™ to receive warranty protection!

Up to 3 YEAR LIMITED WARRANTY

Primos® Hunting ("Primos") warrants the X CAM™ to be free from defects in workmanship and materials, under normal use and conditions, for the time periods and terms as set forth below. According to this Limited Warranty Primos® will, at its discretion, (a) repair the production using new or refurbished parts or (b) replace the product with a new or refurbished product (product that has been returned to its original specifications). In the event of a defect, these are the exclusive remedies available to the original consumer purchaser only and is not assignable or transferable.

Terms: You must register your X CAM™ to receive warranty protection. You may register via postcard or on-line, but not both. If you register on-line you will receive a longer warranty period. You MUST keep a receipt for "Proof of Purchase" for any warranty claims on your X CAM™. More details below.

If registered via the enclosed postcard, you will receive a – Limited 1 Year Warranty*

For a period of 1 year from original date of purchase Primos® will repair or replace the product, at its discretion, if service is required for any reason of any defect or malfunction.

*The included **Warranty Registration Card** must be filled out completely and returned to Primos® within fourteen (14) days after the purchase date of the product.

If registered on-line, you will receive a – Limited 3 YEAR WARRANTY**

For a period of 3 years from original date of purchase Primos® will repair or replace the product, at its discretion, if service is required for any reason of any defect or malfunction.

Go online to www.primos.com/registration and complete the **Online Product Registration within fourteen (14) days of the purchase date of the product.

Limitations: This warranty is valid only if the product is used for the purpose for which it was designed. It does not cover: 1) products which have been damaged by negligence/misuse (*including, but not limited to, improper storage, battery leakage and water damage caused by submersion*), accident or which have been modified or repaired by unauthorized persons; 2) cracked or broken housing of units damaged by excess heat or impact/force; 3) damage caused by wild animals 4) the cost of shipping this product to the factory for service and its return to you. This warranty is valid only in the United States of America. Any applicable implied warranties are limited to 180 days, and Primos® will NOT be liable for consequential damages.

Instructions:

In the event warranty service is needed, please contact Primos® Customer Service to obtain a Return Merchandise Authorization (RMA) number. Once you have secured a RMA number, you will be required to:

1. Write RMA number in large print on outside of package.
2. Remove SD memory card and batteries from product and pack in well-padded or highly protective box. Primos® will NOT be responsible for damage incurred in returning product for repair.
3. Include Proof of Purchase and \$20 for handling and return packing/shipping. Do NOT send cash. Enclose your credit card number and expiration date, check or money order payable to Primos® Hunting Calls™ for the sum of \$20.
4. Send product prepaid to: Primos® Hunting Calls™, Customer Service Department, 604 First Street, Flora, MS 39071.

FCC STATEMENT

This equipment has been tested and found to comply with the limits for a Class B digital device, pursuant to part 15 of the FCC Rules. These limits are designed to provide reasonable protection against harmful interference in a residential installation. This equipment generates, uses and can radiate radio frequency energy and, if not installed and used in accordance with the instructions, may cause harmful interference to radio communications. However, there is no guarantee that interference will not occur in a particular installation. If this equipment does cause harmful interference to radio or television reception, which can be determined by turning the equipment off and on, the user is encouraged to try to correct the interference by one or more of the following measures:

Reorient or relocate the receiving antenna.

Increase the separation between the equipment and receiver.

Connect the equipment into an outlet on a circuit different from that to which the receiver is connected.

Consult the dealer or an experienced radio/TV technician for help



X CAM™
Model No. 63040

X CAM™ BLACKOUT™
Model No. 63050

DISCLAIMERS

Primos® makes no representations or warranties, either expressed or implied, by or concerning any content of these written materials or software, or for damages resulting from the use of the information contained therein. Primos® reserves the right to alter the features and contents of this publication, hardware or software without obligation or advance notice.

Warranty does not extend to any accessories used with the camera.

Primos® is not responsible if you use the X CAM™ for illegal purposes.

Primos® shall not be obligated to perform preventative maintenance, installation, deinstallation, or maintenance.

The illustrations in this manual are for instructional purposes only and may not represent actual product exactly.

PRIMOS
HUNTING

20/20 MOUNT™
GAME CAMERA
POSITIONING SYSTEM

Model No. 63093

**"MOUNT
ANY TRAIL CAMERA,
ANYWHERE!"**
Works with ALL Game Cameras

Easily **ROTATE & FINE TUNE** your camera angle
to get the perfect shot



ELEVATE YOUR CAMERA
for less disturbance, better security &
GREAT OVERHEAD PHOTOS



Place your camera in
ANY LOCATION
with T-Post Adaptor



IMPORTANT RETURN POLICY

Please contact the Primos® Customer Service Team with any comments, questions, problems or return requests. Call (601) 879-9323 or email service@primos.com.

RETURN THIS PRODUCT TO PRIMOS® HUNTING
DO NOT SEND BACK TO THE STORE

604 First Street, Flora, MS 39071 • Office 601-879-9323
• Orders 1-800-523-2395 • Fax 601-879-9324 • primos.com

Printed in USA